

Current I-75 Construction Projects in Lee County



Traffic Incident Management Team Meeting
December 11, 2013



I-75 projects in Lee County

- **I-75—Airport Direct Connect**
- **I-75 Lockett Road to SR 80**
- **I-75 Caloosahatchee River Bridge**
- **I-75 from SR 78 to Charlotte County Line**





I-75—Airport Direct Connect



- Construction start: October 2012
- Estimated completion: Spring 2015
- Cost \$54.1 million
- Design/build contractor: C3TS/Prince
- Engineering and Inspection: Metric Engineering, Inc.



Upcoming closures for Direct Connect

What can be expected during:

- Installation of DMS structure over I-75
- Construction of bridge over I-75
- Construction of bridge over Ben Hill Griffin Parkway/Treeline Avenue
- Installation of signs over I-75 and Terminal Access Road near end of project



Installation of DMS over I-75

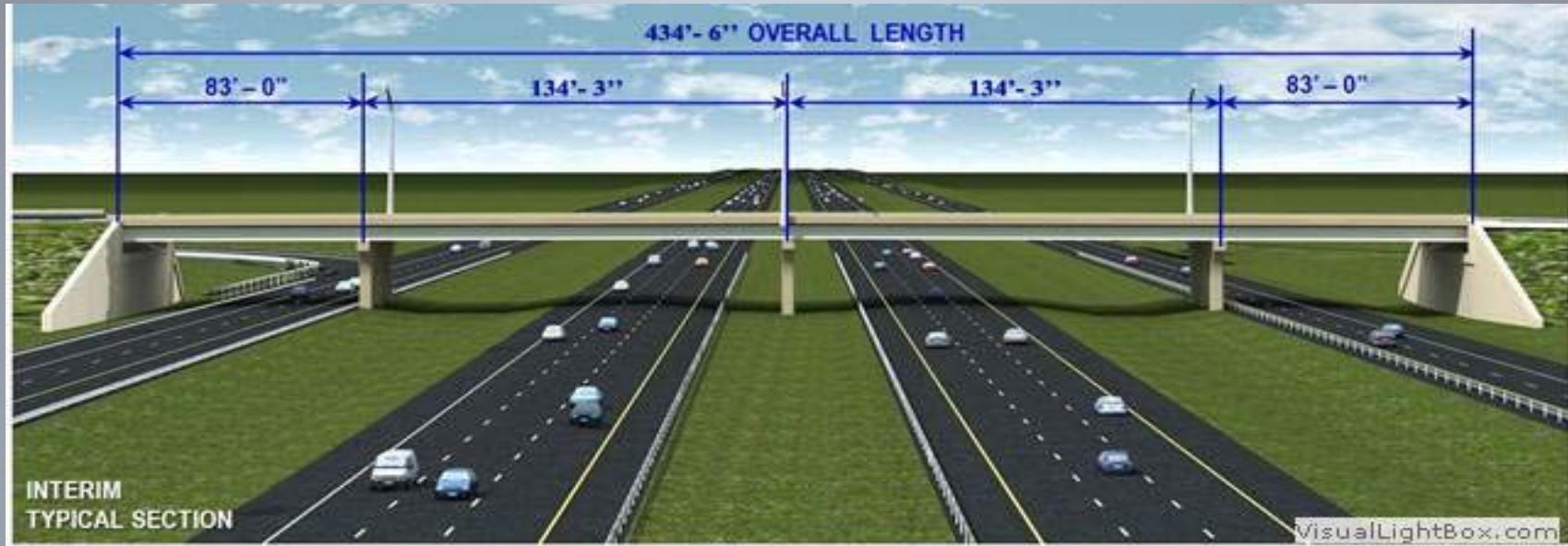


Anticipated activity details

- Work scheduled to occur sometime after first of the year
- Fully close I-75 just south of Daniels Parkway
- One night, between 11 p.m.-5 a.m.
- Traffic will be detoured to local roads



Construction of bridge over I-75



Anticipated activity details

- Work scheduled to occur by spring 2014
- Close I-75 northbound only, then close I-75 southbound only
- Multiple nights, between 11 p.m.-5 a.m.
- Traffic will be detoured to local roads



Construction of bridge over Ben Hill Griffin/Treeline Avenue



Anticipated activity details

- Work not scheduled until much later in 2014
- Airport traffic will always be maintained
 - Must enter airport from south using Alico Road
 - Must leave airport to north using Daniels Parkway



I-75 from Lockett Road to SR 80



- Construction start: June 2011
- Estimated completion: Early 2014
- Cost \$29.2 million
- Contractor: Ajax Paving Industries of Florida, LLC
- Engineering and Inspection: Volkert, Inc.



Upcoming closures for I-75 from Lockett Road to SR 80



Both paving operations could continue through the beginning of 2014

Upcoming Activities on *I-75*

- Final layer of asphalt begins December 15
- Lane closures/traffic shifts occur between 9 p.m. and 5 a.m.
- Ramp closures occur between 11 p.m. and 5 a.m.

Upcoming Activities on *SR 80*

- Milling and resurfacing begins December 11
- Intermittent lane closures/traffic shifts occur between 7:30 p.m. and 6 a.m.



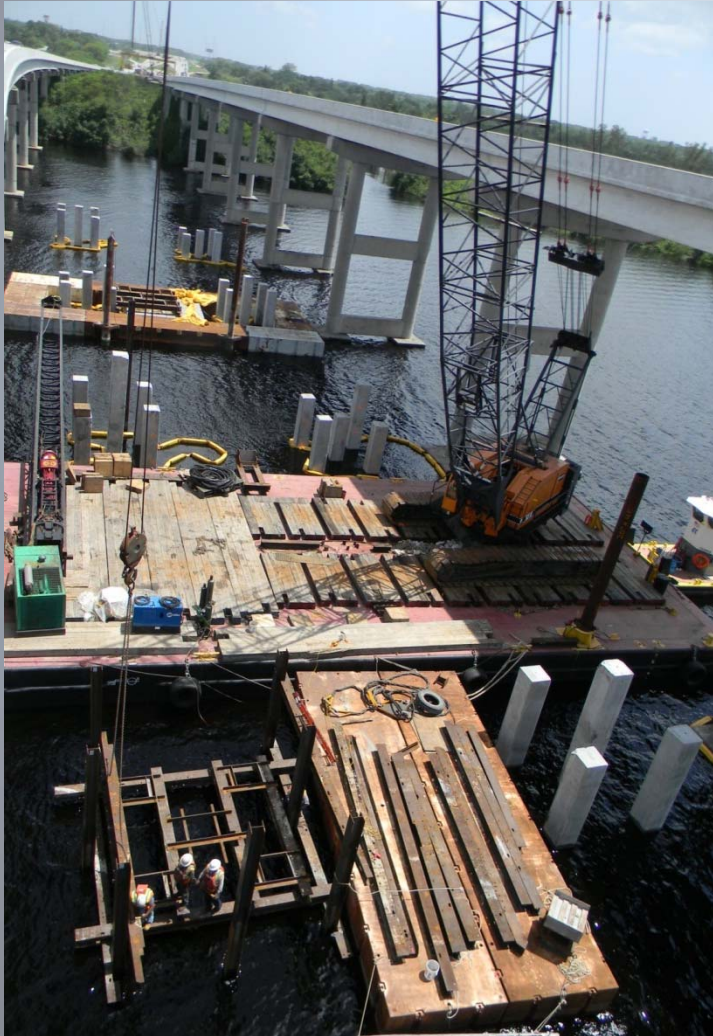
I-75 Caloosahatchee River Bridge



- Construction start: January 2013
- Estimated completion: Fall 2015
- Cost \$72 million
- Contractor: The de Moya Group/Leware Construction Company Joint Venture
- Design team: Stantec (C3TS)/HDR
- Engineering and Inspection: Eisman & Russo Consulting Engineers



Upcoming closures for I-75 Caloosahatchee River Bridge



Upcoming work activities

- Periodic nighttime/overnight lane closures between 9 p.m. to 5 a.m. to move barrier walls or place concrete



I-75 from SR 78 to Charlotte County Line



- Construction start: August 2012
- Estimated completion: Spring 2014
- Cost \$17.3 million
- Contractor: Ajax Paving Industries of Florida, LLC
- Engineering and Inspection: AECOM Technical Services, Inc.



Upcoming closures for I-75 from SR 78 to Charlotte County Line



No major activities scheduled

- Lanes currently shifted to allow crews to work
- Lanes closures will occur in the future, but are not yet scheduled



Notification to public

- Weekly roadwatch update posted on project website and distributed weekly
- Coordinate with ITS to advise motorists of lane closures
- Website for all I-75 construction jobs from Collier County to Manatee County

www.i75onthego.com



Contact Information

I-75—Airport Direct Connect:

Cella Molnar & Associates, Inc.

Jennifer Dorning, jdorning@cella.cc

Office: 239-337-1071 Cell: 239-229-8878

I-75 Lockett Road to SR 80, I-75 Caloosahatchee River Bridge, and I-75 from SR 78 to Charlotte County Line, I-75 Sumter Boulevard to River Road:

Comvia Corporation

David Parks, David.Parks@ComViaCorporation.com

Office 239-770-4935 Cell: 239-273-4969

Interstate Resident Construction Engineer

Florida Department of Transportation - District One

Nikesh Patel, P.E.

Email: Nikesh.Patel@dot.state.fl.us

Cell: 941-465-0411



Questions?



www.i75ontheego.com